

Family History



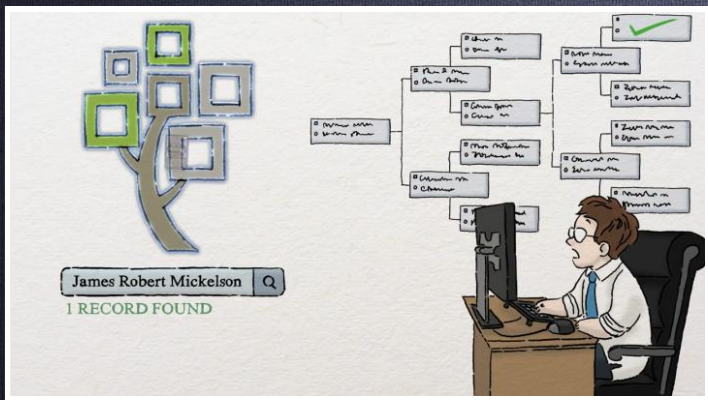
Lesson #6

Indexing

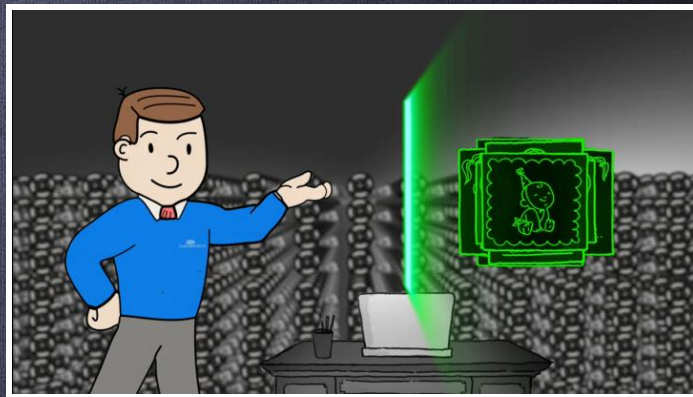


Indexing Overview

- Two videos on indexing:



[2:41]



[1:49]

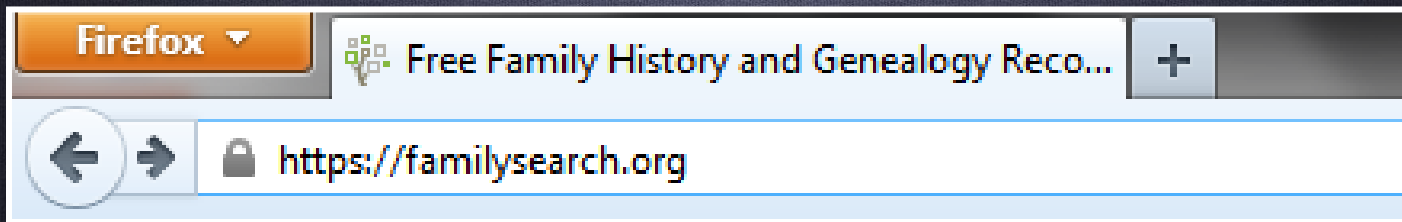
BAPTISMS solemnized in the Parish of Bastwick & Chapelry of Hollinwood
in the County of Lancaster Diocese of Chester in the Year 1827

When Baptized.	Child's Christian Name.	Parents Name.		Abode.	Quality, Trade, or Profession.	By whom the Ceremony was performed.
		Christian.	Surname.			
born March 7. 1827	1827. Nov. 18 th No. 169.	James + Son of Mary	James + Beswick	Bradley Bent	Weaver	Molme
born Oct 30. 1827	18 th No. 170.	Robert + Son of Thamer	Robert + Hibbert	Edge	Hatter	Molme



Downloading Indexing Tool

- Open Web Browser and go to [www.familysearch.org](https://familysearch.org)



Make a Difference

Volunteer to make historical records searchable online.

Learn more



Fan Chart



Photos



Family Tree



Search



Indexing



Family Booklet



My Family: Stories

Indexing is a stepping-stone

Indexing can help you with your own family research.

Get started ►



Test Drive

familysearch.org/indexing/get-started try through a



Get Started

You can help! Learn the basics



Find a Project

Choose what interests you



Get Help

Do you have questions? Find

Get Started with Indexing

Indexing is the process of entering information from historical records into an online, searchable database.

1. Download the indexing program.



2. Click Run to begin the installation.

3. Locate the FamilySearch Indexing icon on your desktop, and double click the icon to open the program.

4. Click **Register for a New Account** and follow the steps to get registered or sign in with your FamilySearch or LDS Account





Downloading Indexing Software

- When download is complete, You will see the shortcut to the indexing software on your desktop.





Indexing Software Overview

- Indexing Quick Start Video:



[5:27]



- [illegible]



Indexing Handout

- Indexing Handout [Click Here](#)

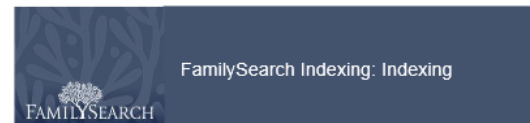


Table of Contents

Index a Batch

Log in	p. 1
Download a Batch	p. 2
View Project Instructions	p. 2
Enter the Image Type	p. 2
Enter Information	p. 2
Duplicate Fields and Records	p. 3
Lookup Lists	p. 3
Mark Blank and Unreadable	p. 4
Insert and Add Records	p. 4
Find Help	p. 4
Quality Check	p. 6
Submit a Batch	p. 6
Return to the Start Page	p. 6
Return a Batch	p. 7

Basic Indexing Guidelines

Type What You See	p. 7
Interpreting Difficult Handwriting	p. 7
Name Titles and Terms	p. 8
Corrected Information	p. 8
Punctuation	p. 8
Abbreviations	p. 8
Place-Names	p. 8
<i>Working with Images</i>	
Image Size	p. 9
Highlights	p. 9
Ruler	p. 10
Rotate	p. 10
Show Previous or Next Image	p. 10
Invert	p. 10
Sharpen	p. 11
Brightness and Contrast	p. 11

Log in

1. On your desktop, click the **FamilySearch Indexing** icon, or on the FamilySearch indexing Web site <http://indexing.familysearch.org>, click **Begin Indexing**.
2. Enter your user name and password.
3. Click **OK**.

Index a Batch



Statistics

- Indexing Effort World-Wide:

Total Records Completed: 1,074,435,236

Current Projects: 217

Total Records Completed in 2013: 116,063,640

Contributors in 2013: 268,018

Stats reported in the November FamilySearch Indexing newsletter.



Need Help?

- Help is always available 24 hours a day.



1-800-406-1830